

Celebrating
100 years

**FREMANTLE WORKERS
SOCIAL AND LEISURE CLUB**





FUTURE DIRECTIONS

A BRIEFING to CLUB MEMBERS

Don Whittington

President, Fremantle Workers Social and Leisure Club Inc.

31 May 2014

Options for the Club's long-term future

Sale of 9 Henry Street

Options for permanent premises

Options for temporary premises

No decisions are possible at this stage

A Special General Meeting of members
will be called as and when required

Fremantle Workers Social and Leisure Club
FUTURE DIRECTIONS
PROPOSED OPTIONS

Railway Station

Fremantle Park

Bowling and Tennis Clubs

Kings Square & Town Hall

Existing Premises

Fremantle WA, Australia

South Fremantle Football Club



Fremantle Workers Social and Leisure Club

FUTURE DIRECTIONS

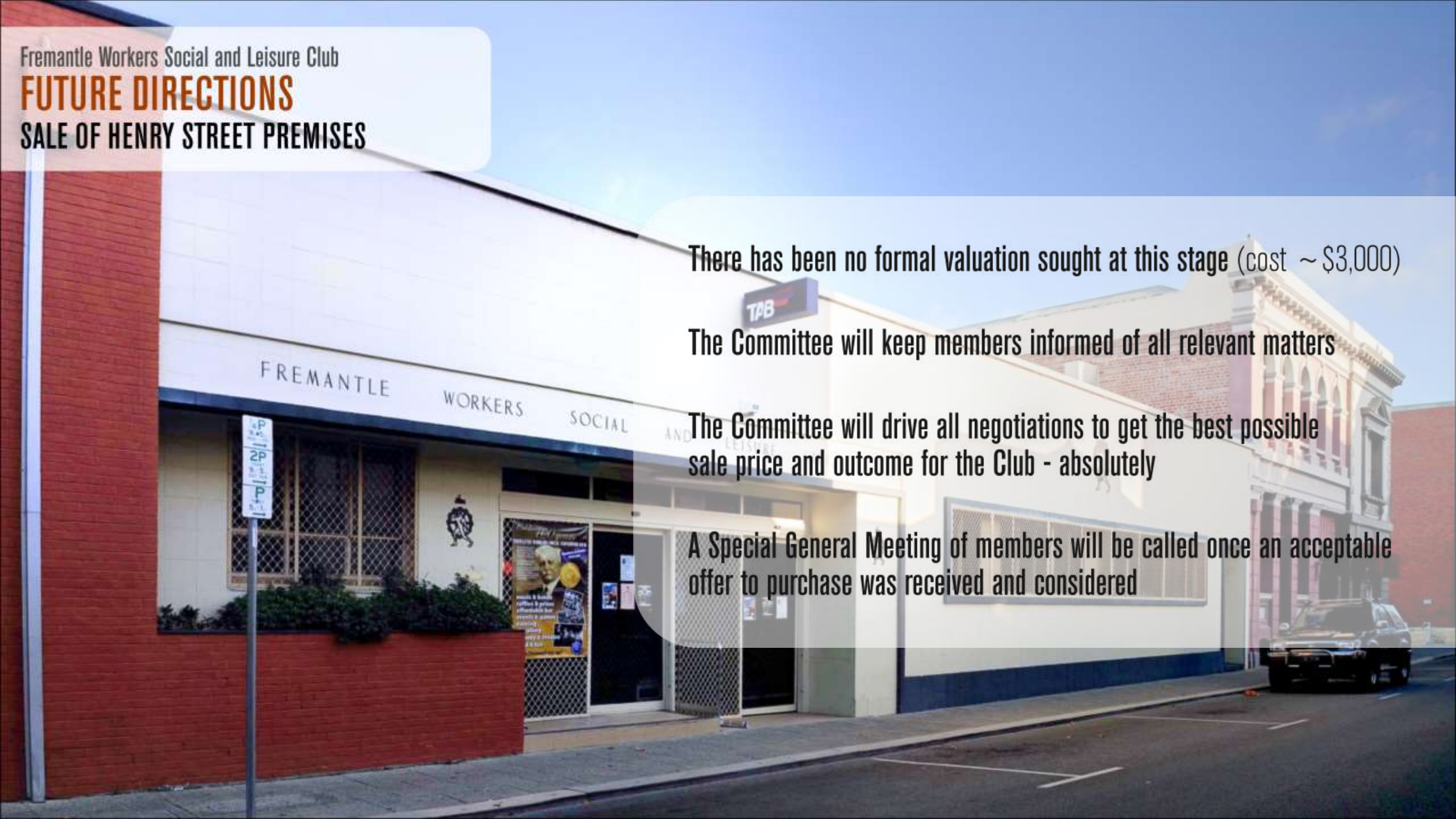
SALE OF HENRY STREET PREMISES

There has been no formal valuation sought at this stage (cost ~ \$3,000)

The Committee will keep members informed of all relevant matters

The Committee will drive all negotiations to get the best possible sale price and outcome for the Club - absolutely

A Special General Meeting of members will be called once an acceptable offer to purchase was received and considered

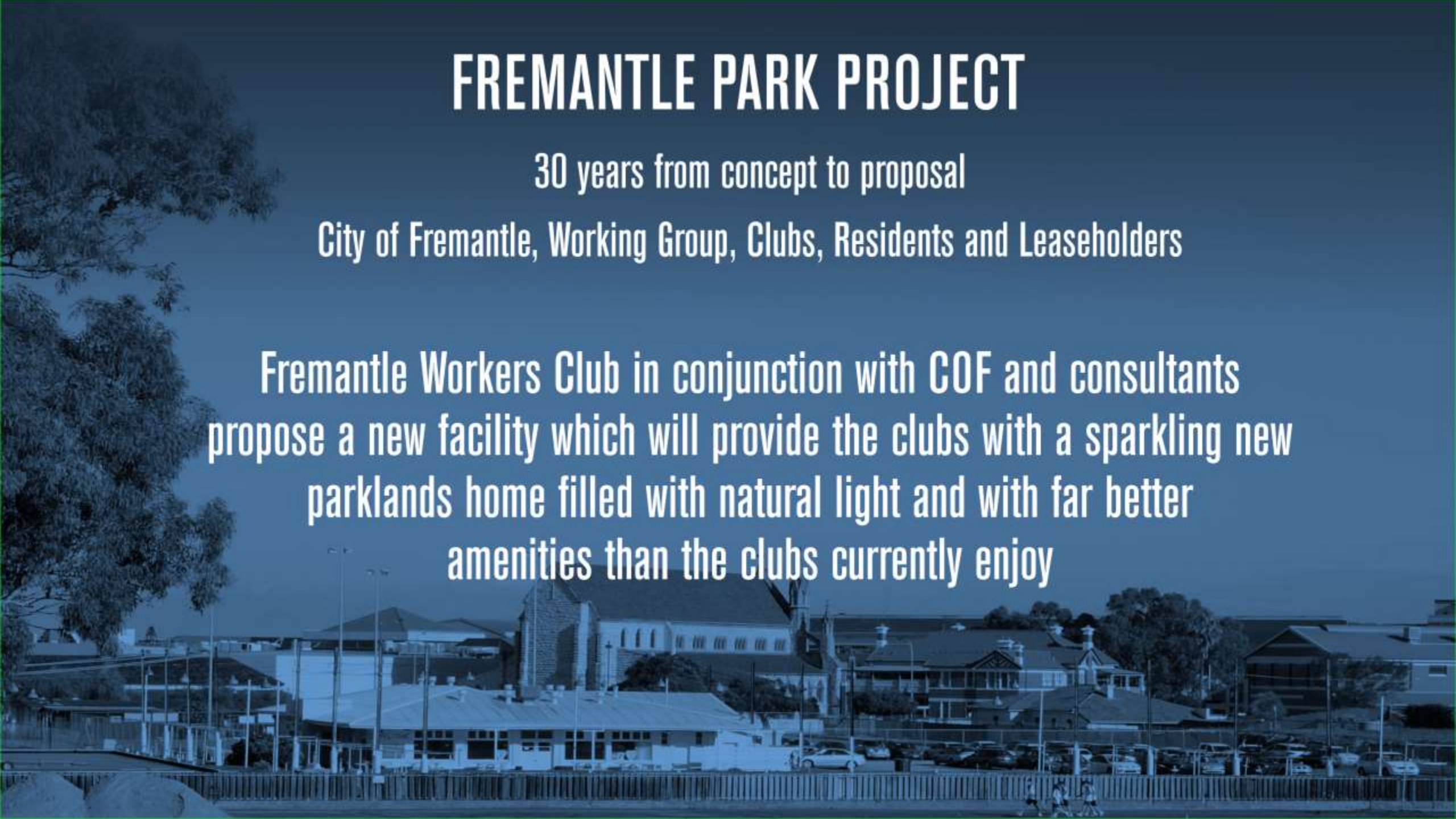


FREMANTLE PARK PROJECT

30 years from concept to proposal

City of Fremantle, Working Group, Clubs, Residents and Leaseholders

Fremantle Workers Club in conjunction with COF and consultants propose a new facility which will provide the clubs with a sparkling new parklands home filled with natural light and with far better amenities than the clubs currently enjoy



LONG TERM OPTION - Fremantle Park

ADVANTAGES

Joint development with existing clubs

Access to on-site parking

New & better equipped facilities

Shared and reduced overheads and maintenance

Natural light

Views over Fremantle Park

Verandas & usable outdoor areas including BBQ facilities

Access to Tennis and Bowls and other sporting & recreational options

Opportunity to sign up more members to our club

Fremantle Workers Social and Leisure Club
FUTURE DIRECTIONS
FREMANTLE PARK OPTION

FREMANTLE PARK

Fremantle Bowling Club

Fremantle Tennis Club

Fremantle Workers Social and Leisure Club

FUTURE DIRECTIONS

FREMANTLE PARK OPTION

Fremantle Park co-location facilities



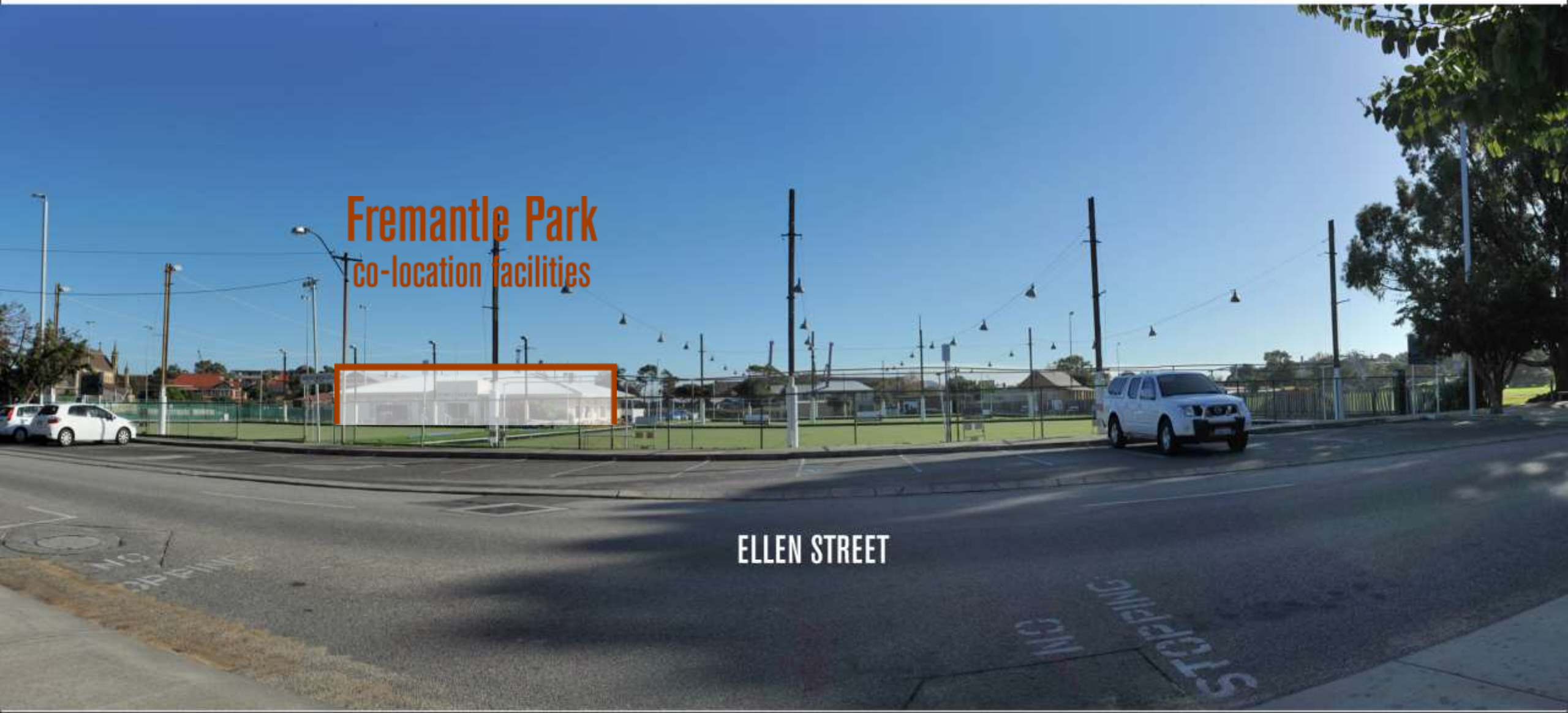
Fremantle Workers Social and Leisure Club

FUTURE DIRECTIONS

FREMANTLE PARK OPTION

Fremantle Park
co-location facilities

ELLEN STREET



FUTURE DIRECTIONS

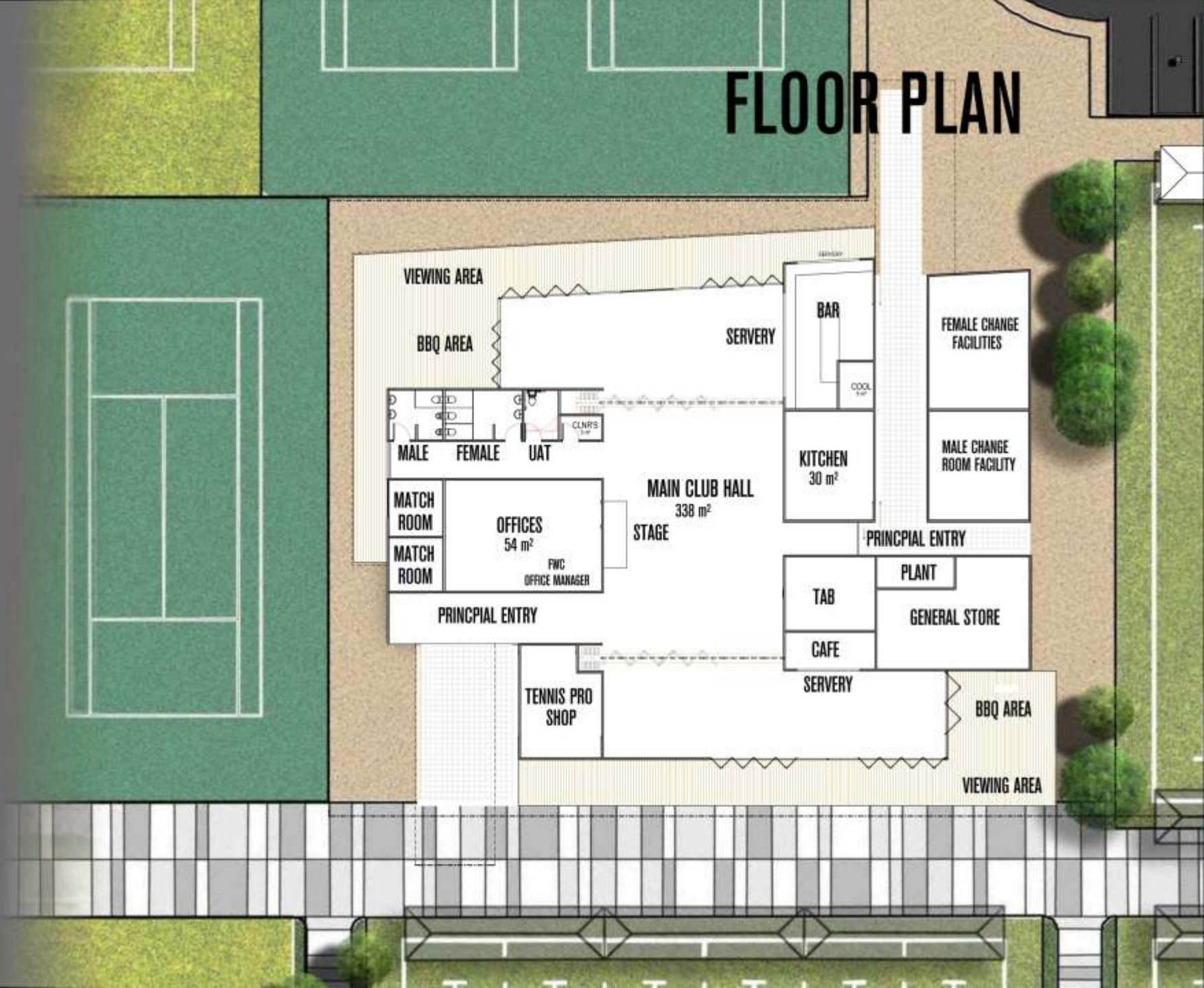
FREMANTLE PARK OPTION



FUTURE DIRECTIONS

FREMANTLE PARK OPTION

FLOOR PLAN



0 1000 2000 3000 4000 5000 mm
SCALE 1:1000



www.ghd.com.au

FUTURE DIRECTIONS

Fremantle Park Project Principal Funding Organisations



A priority funded COF project



Department of
Sport and Recreation

Two supportive grants received
Likely capital funding

FUTURE DIRECTIONS

FREMANTLE PARK SPORTING AND RECREATION PROJECT

Principal Funding Organisations



Fremantle Workers Club



Fremantle Bowling Club

tennisfreo

Fremantle Tennis Club

Fremantle Workers Social and Leisure Club
FUTURE DIRECTIONS
SOUTH FREMANTLE FOOTBALL CLUB OPTION

Fremantle Oval Grandstand

FREMANTLE
OVAL

South Fremantle Football Club



Fremantle Workers Social and Leisure Club

FUTURE DIRECTIONS

SOUTH FREMANTLE FOOTBALL CLUB OPTION



SHORT TERM OPTION - Fremantle Oval

South Fremantle Football Club

ADVANTAGES

Larger better equipped facilities

Guaranteed use of ballroom on Sundays

Ballroom and bar areas available for other FWS&LC events as required

Abundant car parking

Access to public transport

Social membership of SFFC included in FWS&LC membership

No management costs or responsibility for maintenance and utility payments

Opportunity to sign up more members to our Club

Fremantle Workers Social and Leisure Club

FUTURE DIRECTIONS

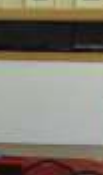
SOUTH FREMANTLE FOOTBALL CLUB OPTION



Fremantle Workers Social and Leisure Club

FUTURE DIRECTIONS

SOUTH FREMANTLE FOOTBALL CLUB OPTION



Fremantle Workers Social and Leisure Club

FUTURE DIRECTIONS

SOUTH FREMANTLE FOOTBALL CLUB OPTION



Fremantle Workers Social and Leisure Club

FUTURE DIRECTIONS

SOUTH FREMANTLE FOOTBALL CLUB OPTION

**DANCE FLOOR
beneath seating**

A large, well-lit hall with a red carpet. The room is filled with rows of red chairs with black frames, arranged in a semi-circle facing a stage area. The stage area features a large white screen and a podium. The walls are yellow, and the ceiling is a drop ceiling with recessed lighting. A yellow pillar is visible on the left side of the room. The text 'DANCE FLOOR beneath seating' is overlaid on the right side of the image.

Fremantle Workers Social and Leisure Club

FUTURE DIRECTIONS

SOUTH FREMANTLE FOOTBALL CLUB OPTION



Fremantle Workers Social and Leisure Club

FUTURE DIRECTIONS

SOUTH FREMANTLE FOOTBALL CLUB OPTION



Fremantle Workers Social and Leisure Club

FUTURE DIRECTIONS

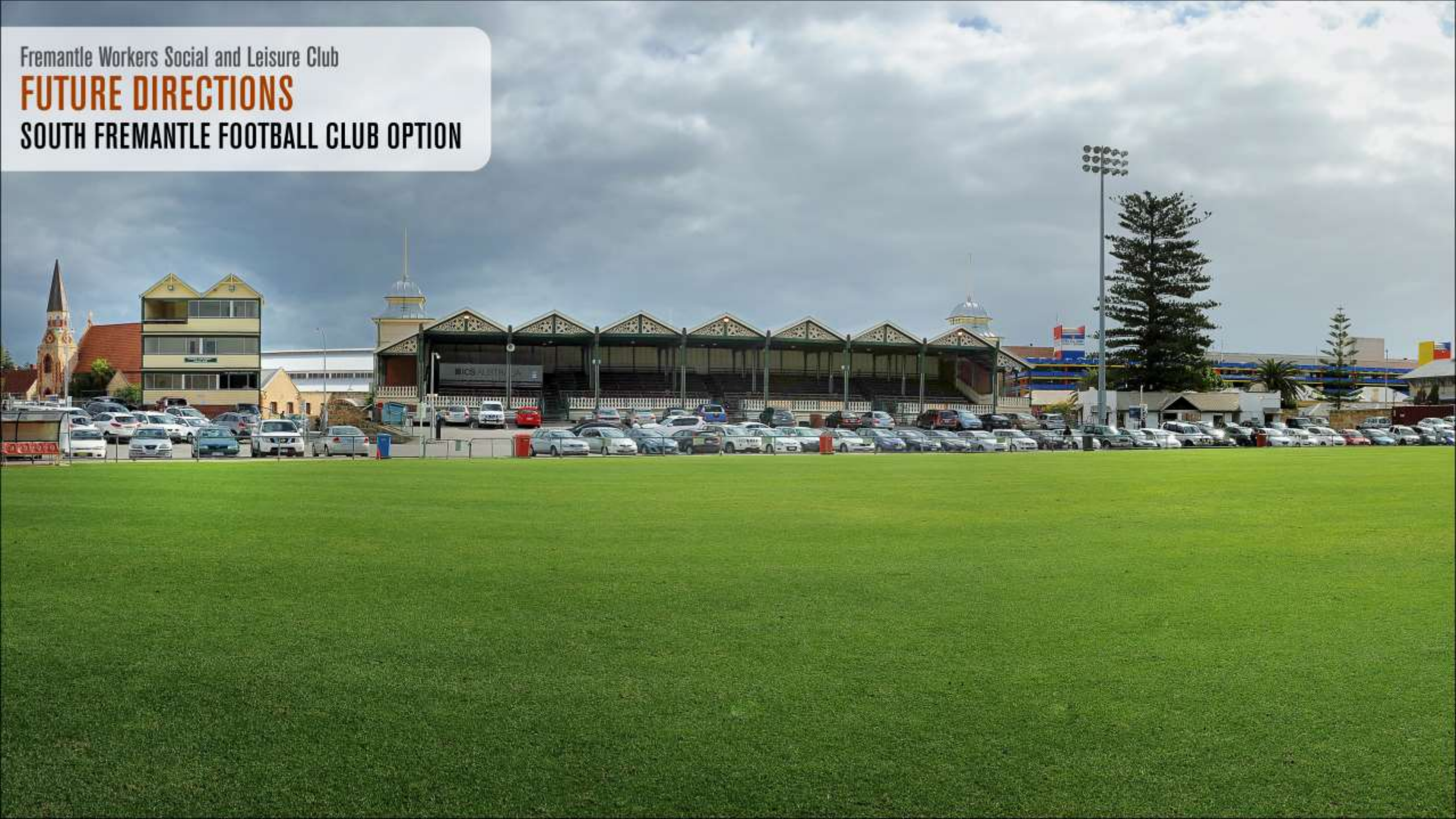
SOUTH FREMANTLE FOOTBALL CLUB OPTION



Fremantle Workers Social and Leisure Club

FUTURE DIRECTIONS

SOUTH FREMANTLE FOOTBALL CLUB OPTION



Fremantle Workers Social and Leisure Club

FUTURE DIRECTIONS

SOUTH FREMANTLE FOOTBALL CLUB OPTION



PLEASE SUPPORT OUR GENEROUS SPONSORS



City of Fremantle

Fremantle Ports

Bendigo Bank

Fremantle

Maritime Union of Australia

Villa Roma

Ristorante & Pizza

The Fremantle Herald

City of Cockburn

Roel Loopers

Profile Photography

Bob Sommerville

Presentation Graphics + Photography



Jackpot Sponsor



SPECIAL THANKS TO VOLUNTEER

Garry Gillard

for developing and maintaining
the Club's website

www.freeworkers.net